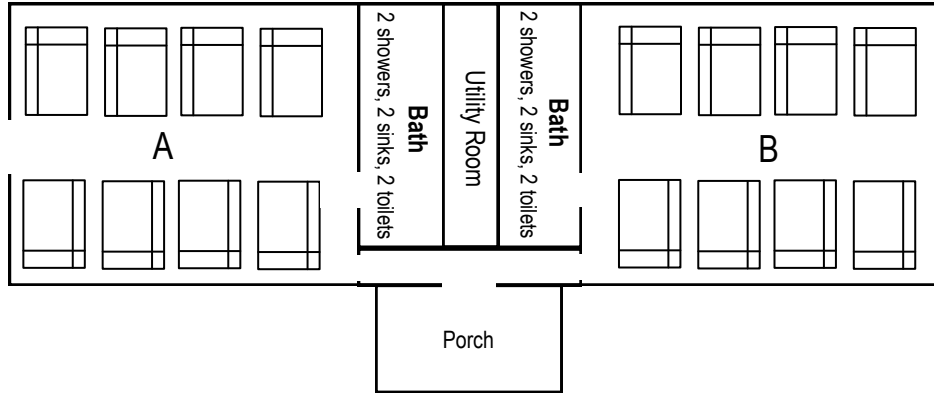


# Lodging Available By Cabin

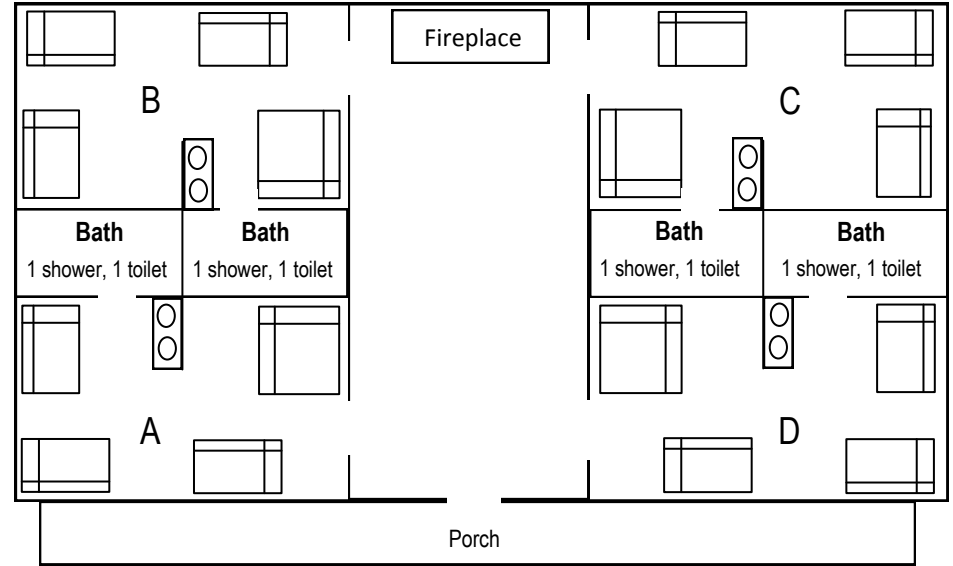


*Cabins 1 & 2*



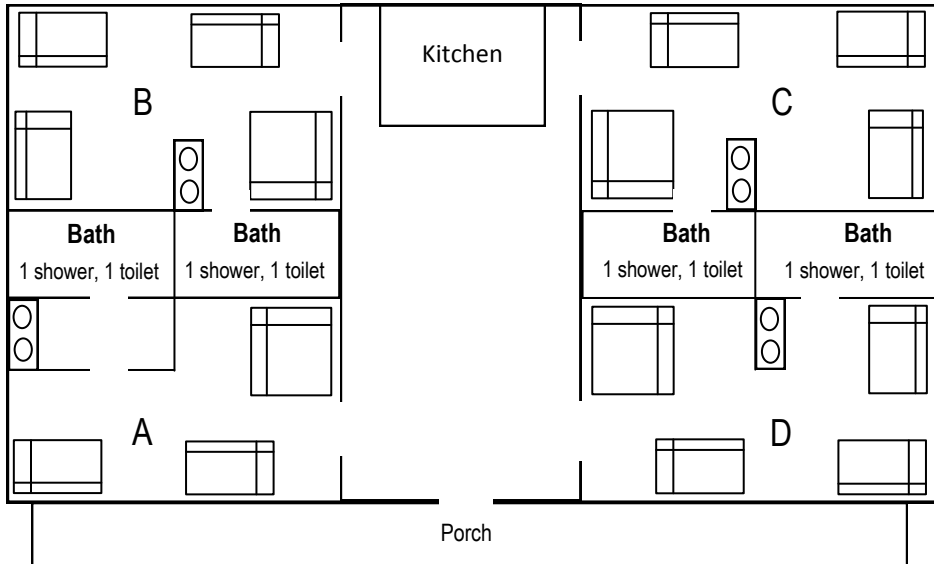
Each room has 16 twin beds in bunks, for a total of 32 beds in each cabin.

*Cabin 4*



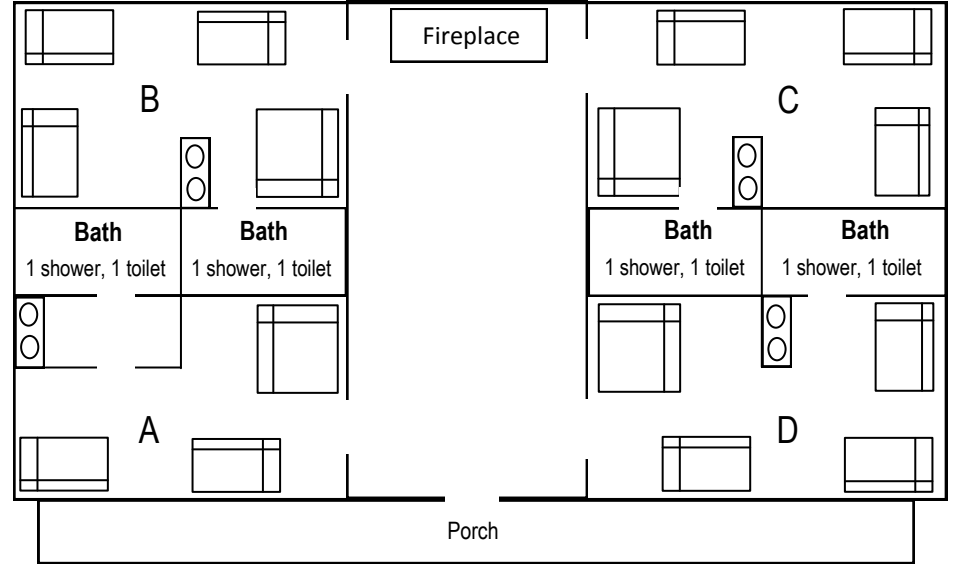
Each room has 1 double and 7 twin beds in bunks, for a total of 32 beds in the cabin.

*Cabin 5*



Room A is handicap accessible and has 1 double and 5 twin beds in bunks. Rooms B-D have 1 double and 7 twin beds in bunks, for a total of 30 beds in the cabin. The kitchen has a stove, oven, microwave, and full-sized refrigerator.

*Cabins 6, 7, 8, & 10*

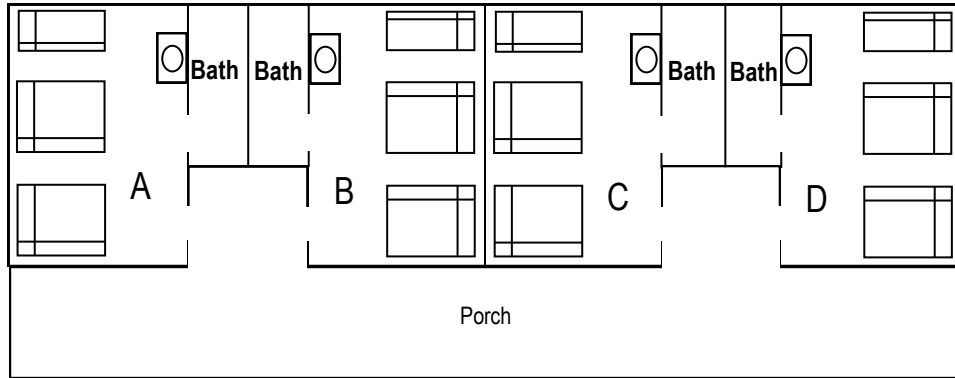


Room A is handicap accessible and has 1 double and 5 twin beds in bunks. Rooms B-D have 1 double and 7 twin beds in bunks, for a total of 30 beds in the cabin.

# Lodging Available By Room

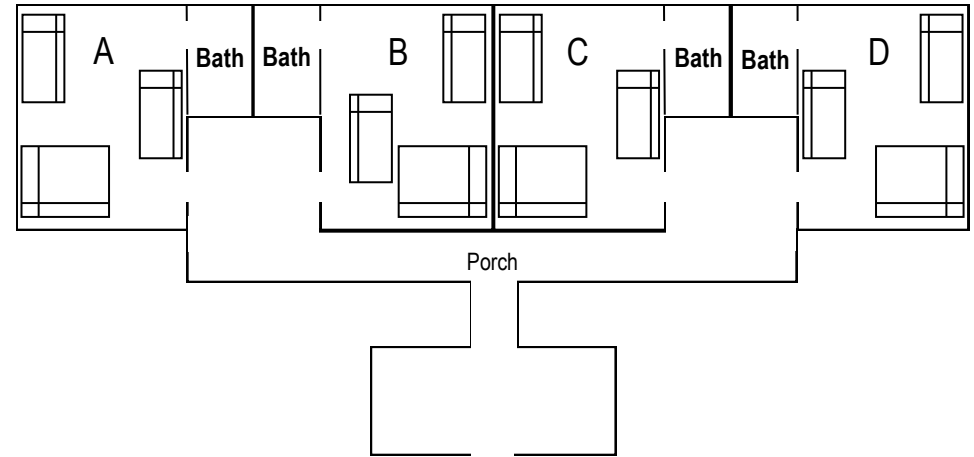


*Cabin 3*



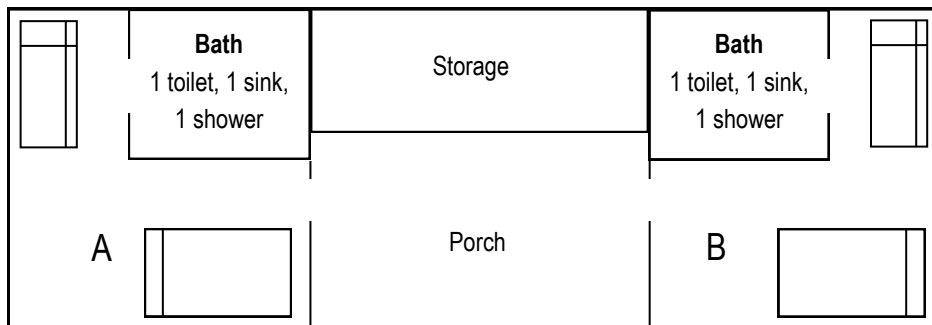
Each room has 2 doubles and 4 twin beds in bunks, for a total of 24 beds in the cabin. Each bathroom has 1 toilet and 1 shower, with 1 sink in the main room.

*Cabin 9*



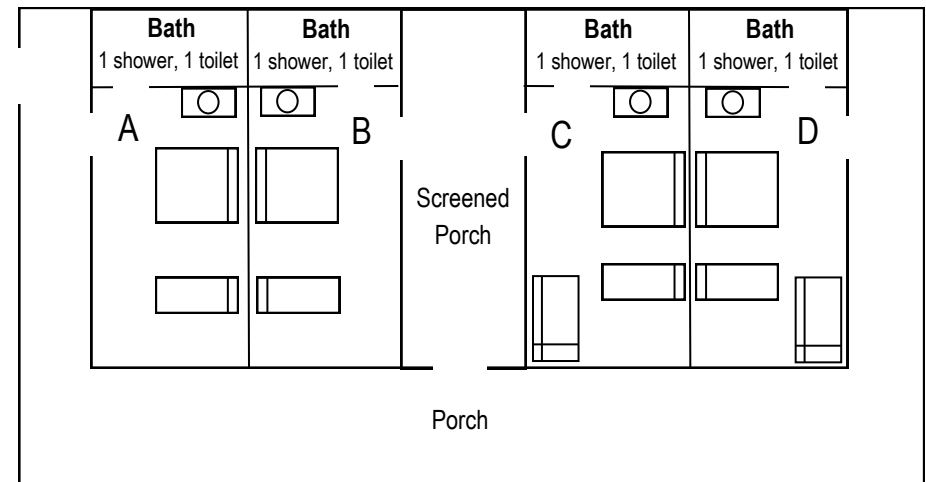
Each room has 1 double and 5 twin beds in bunks, for a total of 24 beds in the cabin. Each bathroom has 1 toilet, 1 shower, and 1 sink.

*Cabin 11*



Each room has 1 double and 2 twin beds in bunks, for a total of 6 beds in the cabin.

*Cabin 12*



Rooms A and B have 1 double and 1 twin bed. Rooms C and D have 1 double and 3 twins, 1 of which is a top bunk. There are a total of 12 beds in Cook's Cabin.